

# Global Price List

**UK****Canada****France****South Africa****Cyprus**

# Contents

We think differently about education, offering **global upskilling experiences** that prepare students for the **future of work**.

Our programs focus on developing the skills and mindset needed to succeed in a changing world.

Through a global network of centres, we deliver practical, real-world learning and industry-recognised **micro-credentials**.

By combining practical learning, cultural immersion, and expert support, we equip students to excel.

## UK

London	4
Liverpool	6
Brighton	8
Bournemouth	10

## Canada

Vancouver	12
Toronto	14
Calgary	16

## France

Paris	18
-------	----

## South Africa

Cape Town	20
-----------	----

## Cyprus

Limassol	22
----------	----



La certification Qualiopi a été délivrée au titre de la catégorie d'action suivante : ACTIONS DE FORMATION

\*\*\* formations  
\*\*\* enseignants  
\*\*\* accueil  
\*\*\* locaux  
\*\*\* gestion

29 mars 2024 - 28 mars 2027

établissement  
d'enseignement  
supérieur privé





# Our Promise

We're passionate about growing communities of global thinkers and explorers, at home and abroad – whatever their story. We set up Bayswater because we want people from every walk of life to get a buzz from discovering new cultures, exploring new flavours, and learning what's out there. We think of them as global spirits, like ourselves.



## A home away from home

We're here to support you, at every step of your journey.

## More power to you

We're a student powered community, listening to you and celebrating your efforts and achievements.

## Your success is ours

It's our job to meet your needs and give you what you need to succeed. Your goals are ours too.

## Inspiring global spirits

Why we do what we do – to empower all young people to create the life they want to live.



# London

## Course Fees

### General English and IELTS Preparation Prices and lessons are per week

Courses	Lessons	1 to 11	12 to 23	24+
Standard	20	£360	£325	£285
Intensive	25	£405	£360	£315
Super Intensive	30	£450	£405	£360

- IELTS Preparation: Available in Standard 20 lessons. This can be combined with an additional 5 or 10 General English lessons as part of our Intensive or Super Intensive Course
- Minimum level for IELTS Preparation: Level 4 (Bayswater)/B1 (CEFR)

English Plus Add-ons	Lessons	Price	Notes
One to one lessons	5	£425	Custom packages available

Family Options	Lessons	1+	Extra adult/child	Course dates
Young Learner (age 12+)	20	£360	£325	23 Jun - 15 Aug
Parent & Child (age 12+)	20	£650	£325	
Day Camp (age 12-17)	20	£565	-	

- Young Learners must be accommodated with a parent/guardian.
- Parent and child timetables may differ

### Cambridge Exam Preparation Prices are per course

Courses	Lessons	8 week	10 week	Dates
Standard	20	£2,880	£3,600	31 Mar, 15 Sep
Intensive	25	£3,240	£4,050	
Super Intensive	30	£3,600	£4,500	

- First (FCE) - min level B2 (level 6)
- Advanced (CAE) - min level C1 (level 8)
- Cambridge Preparation Available in Standard 20 lessons. Can be combined with 5 or 10 General English lessons as part of an Intensive or Super Intensive Course

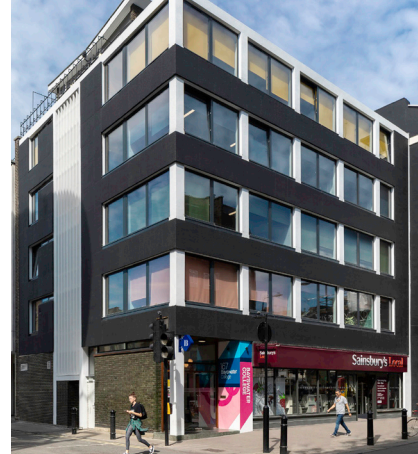
### Professional Level 5 (Bayswater) / B1+ (CEFR) Requirement

Professional Course	Duration	Price	Start Dates
Digital Marketing	4 weeks	£2,100	3 Feb, 3 Mar, 7 Apr, 6 May, 2 Jun, 7 Jul, 4 Aug, 1 Sep, 6 Oct, 3 Nov
International Business Management	4 weeks	£2,100	6 Jan, 3 Mar, 6 May, 2 Jun, 7 Jul, 4 Aug, 1 Sep, 6 Oct, 3 Nov
Luxury Brand Management	4 weeks	£2,100	3 Feb, 7 Apr, 2 Jun, 7 Jul, 4 Aug, 6 Oct
Customer Experience Management	4 weeks	£2,100	3 Mar, 6 May, 7 Jul, 1 Sep, 3 Nov

### Premium Package

Professional and English	8 weeks	12 weeks	24 weeks	36 weeks
Any UK city. Any English or Professional Course.	£3,310	£4,530	£8,000	£11,430
Extra week	£414	£378	£333	£318

- Premium Package includes registration fee and materials fee
- Courses to be studied one course at a time, not simultaneously



▲ 167 Queensway, London W2 4SB

### Quick Facts

#### All Courses Include

Online placement test  
Welcome activity  
Organised social programme  
Student handbook  
End of course certificate  
WiFi

#### Professional Courses

Minimum age: 18  
Class size: Max 15, Average 8  
Duration: 4 weeks, 60 hours

#### English Courses

Minimum age: 16  
Minimum stay: 1 week  
Courses start: Every Monday  
Class size: Max 15, Average 10

#### English Lessons

1 Lesson: 45 minutes  
20 Lessons: 15 hrs/week  
25 Lessons: 18.75 hrs/week  
30 Lessons: 22.5 hrs/week

Course schedule may take place in the morning or afternoon

#### School Closure Dates

1-3 Jan, 18 & 21 Apr, 5 & 26 May, 25 Aug, 22 to 26 Dec 2025, 1 Jan 2026



# London

## Accommodation, Transfers and Other Fees

### Accommodation Prices are per week

Tube: 

Homestay Age 16+	Zone	Time	Bed & Breakfast	Half Board
Single Shared Bathroom	4 - 5	45 - 60 min 	£240	£270
Twin Shared Bathroom*	4 - 5	45 - 60 min 	£230	£260
Single Shared Bathroom	3	30 - 55 min 	£260	£290
Twin Shared Bathroom*	3	30 - 55 min 	£250	£280
Single Shared Bathroom	2	20 - 55 min 	£270	£300
Twin Shared Bathroom*	2	20 - 55 min 	£260	£290
<b>Summer Supplement</b> 01 Jun - 30 Aug   £30 p/w		<b>Christmas Supplement</b> 21 - 27 Dec   £50 p/w		<b>Private Bathroom</b> (Only Zone 4/5) £45 p/w
<b>Dietary Supplement</b> £25 - 45 p/w		<b>Under 18 Supplement**</b> £20 p/w		

- \* Twin rooms are only available for two people traveling together
- \*\* Applicable to ages 16-17
- Students in a single room may be housed in the same homestay as other students
- Students under 18 in a homestay must book at least Half Board, a return transfer and provide a parental consent form
- Extra nights: billed on a pro-rata basis

Residences Age 18+	Zone	Time	Prices per week	Dates
Standard Single Studio	1 - 2	20 - 60 min 	£425	Year round
Standard Single En suite	1 - 4	20 - 60 min 	£475	Year round
Premium Single En suite	1 - 4	20 - 60 min 	£595	Year round

### Other Charges

Prices per booking	
Registration Fee	£95
Accommodation Booking Fee	£50
Bank Charges	£12
Exam Fee - IELTS (IELTS Test Centre)*	£265
Exam fee - FCE*	£235
Exam fee - CAE*	£240
Professional Course Materials Fee (4 weeks)	£28
Career Preparation Programme Fee***	£1,000
Prices per week	
Materials fee**	£7
Insurance*	£8

- \* Optional charges
- \*\* Applies to all language courses
- \*\*\* Available for YMS visa holders
- Materials fee includes access to the my.Bayswater learning platform and all learning materials used in the classroom

All prices are subject to change

### Transfers

Airport	One Way
Heathrow	£175
London City	£130
Luton	£210
Gatwick	£230
Stansted	£220
St Pancras	£100




Transfer prices can include up to 2 people per vehicle - same flight and address



▲ Chapter Portobello, 1 Alderson St, London W10 5JY

### Quick Facts

#### Room Types

-  Single
-  Twin
-  Studio

#### Board Types

##### Bed & Breakfast:

Room and breakfast provided

##### Half Board:

Room, breakfast and evening meal provided

##### Self-catering:

Room provided without meals

#### Residences are self-catering

#### Bathroom Types

##### En suite:

Toilet and shower or bath can be accessed from within your room

**Shared Bathroom:** Bathroom shared with other residents and/or host family

**Studio:** En suite bathroom, with kitchenette

##### Arrival and departure day:

Sunday to Saturday



#### Agent Enquiries

Our Agents are appointed experts in your country and can give you specialist advice on our courses, as well as any visa requirements. Contact us for an Agent in your area.

For agent sales enquiries please contact us at partners@bayswater.ac



# Liverpool

## Course Fees

### General English and IELTS Preparation Prices and lessons are per week

Courses	Lessons	1 to 11	12 to 23	24+
Standard	20	£275	£250	£230
Intensive	25	£305	£275	£250
Super Intensive	30	£345	£330	£295

- IELTS Preparation: Available as 1 or 2 modules. A combination of 20 or 25 General English lessons + 5 or 10 IELTS lessons, as part of our Intensive or Super Intensive Course
- Minimum level for IELTS Preparation: Level 4 (Bayswater)/B1 (CEFR)

English Plus Add-ons	Lessons	Price	Notes
One to one lessons	5	£375	Custom packages available

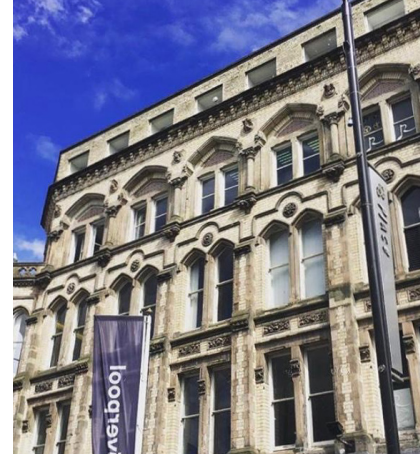
### Professional Level 5 (Bayswater) / B1+ Requirement

Professional Course	Duration	Price	Start Dates
Digital Marketing	4 weeks	£2,100	3 Feb, 7 Apr, 2 Jun, 4 Aug, 6 Oct
International Business Management	4 weeks	£2,100	3 Mar, 6 May, 7 Jul, 1 Sep, 3 Nov

### Premium Package

Professional and English	8 weeks	12 weeks	24 weeks	36 weeks
Any UK city. Any English or Professional Course	£3,310	£4,530	£8,000	£11,430
Extra week	£414	£378	£333	£318

- Premium Package includes registration fee and materials fee
- Courses to be studied one course at a time, not simultaneously



▲ 42-46 Whitechapel,  
Liverpool L1 6DS

### Quick Facts

#### All Courses Include

Online placement test  
Welcome activity  
Organised social programme  
Student handbook  
End of course certificate  
WiFi

#### Professional Courses

Minimum age: 18  
Class size: Max 15, Average 8  
Duration: 4 weeks, 60 hours

#### English Courses

Minimum age: 16  
Minimum stay: 1 week  
Courses start: Every Monday  
Class size: Max 15, Average 12

#### English Lessons

1 Lesson: 45 minutes  
20 Lessons: 15 hrs/week  
25 Lessons: 18.75 hrs/week  
30 Lessons: 22.5 hrs/week

Course schedule may take place in the morning or afternoon

#### School Closure Dates

1-3 Jan, 18 & 21 Apr, 5 & 26 May,  
25 Aug, 22 to 26 Dec 2025,  
1 Jan 2026



# Liverpool

## Accommodation, Transfers and Other Fees

### Accommodation Prices are per week

Bus: Walk:

Homestay Age 16+	Time	Bed & Breakfast	Half Board
Single Shared Bathroom	30 - 60 min	£175	£200
Twin Shared Bathroom*	30 - 60 min	£165	£190

<b>Summer Supplement</b> 01 Jun - 30 Aug   £30 p/w	<b>Christmas Supplement</b> 21 - 27 Dec   £50 p/w	<b>Private Bathroom</b> £45 p/w
---	--	------------------------------------

<b>Dietary Supplement</b> £35 p/w	<b>Under 18 Supplement**</b> £20 p/w
--------------------------------------	---

- \* Twin rooms are only available for two people traveling together
- \*\* Applicable to ages 16-17
- Students in a single room may be housed in the same homestay as other students
- Students under 18 in a homestay must book at least Half Board, a return transfer and provide a parental consent form
- Extra nights: billed on a pro-rata basis

Residences Age 18+	Time	Prices per week	Dates
Budget Single En suite	15 min	£165	Year round
Standard Single En suite	10 - 15 min	£195	Year round
Premium Single En suite	10 - 15 min	£205	Year round

### Other Charges

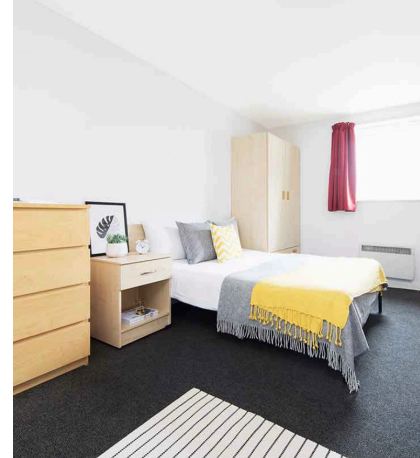
Prices per booking	
Registration Fee	£95
Accommodation Booking Fee	£50
Bank Charges	£12
Professional Course Material Fee (4 weeks)	£28
Career Preparation Programme Fee***	£1000
Prices per week	
Materials Fee**	£7
Insurance*	£8

- \* Optional charges
- \*\* Applies to all language courses
- \*\*\* Available for YMS visa holders
- Materials fee includes access to the my.Bayswater learning platform and all learning materials used in the classroom

### Transfers

Airport	One Way	Return
Liverpool Airport	£75	£120
Manchester Airport	£120	£205
London Airports	On request	

Transfer prices can include up to 2 people per vehicle - same flight and address



▲ Atlantic Point, Naylor St, Liverpool L3 6LS

### Quick Facts

#### Room Types

- Single
- Twin

#### Board Types

##### Bed & breakfast:

Room and breakfast provided

##### Half Board:

Room, breakfast and one evening meal provided

##### Self-catering:

Room provided without meals

#### Residences are self-catering

#### Bathroom Types

##### En suite:

Toilet and shower or bath can be accessed from within your room

##### Shared Bathroom:

Bathroom shared with other residents and/or host family

**Studio:** En suite bathroom, with kitchenette

#### Arrival and departure day:

Sunday to Saturday



All prices are subject to change

#### Agent Enquiries

Our Agents are appointed experts in your country and can give you specialist advice on our courses, as well as any visa requirements. Contact us for an Agent in your area.

For agent sales enquiries please contact us at partners@bayswater.ac

# Brighton

## Course Fees

### General English and IELTS Preparation

Prices and lessons are per week

Courses	Lessons	1 to 11	12 to 23	24+
Standard	20	£330	£295	£255
Intensive	25	£375	£330	£295
Super Intensive	30	£430	£380	£330

- IELTS Preparation: Available as a module. A combination of 20 or 25 General English lessons + 5 IELTS lessons, as part of our Intensive or Super Intensive Course. IELTS core class subject to availability and demand.
- Minimum level for IELTS preparation: Level 4 (Bayswater)/B1 (CEFR)

English Plus Add-ons	Lessons	Price	Notes
One to one lessons	5	£425	Custom packages available

Family Options	Lessons	1+	Extra adult/child	Course dates
Young Learner (age 12+)	20	£330	£295	23 Jun - 15 Aug
Parent & Child (age 12+)	20	£590	£295	
Day Camp (age 12-17)	20	£520	-	

- Individual young learner students aged 12-15 must be accommodated with a parent/guardian
- Parent and child timetables may differ

### Cambridge Exam Preparation

Prices are per course

Courses	Lessons	4 weeks	10 weeks	Dates
Standard	20	£1,320	£3,300	6 Jan, 30 Jun
Intensive	25	£1,500	£3,750	
Super Intensive	30	£1,720	£4,300	

- Minimum level for FIRST (FCE): Level 6 (Bayswater) / B2 (CEFR)
- Minimum level for Advanced (CAE): Level 8 (Bayswater) / C1 (CEFR)
- Cambridge Preparation Available in Standard 20 lessons. Can be combined with 5 or 10 General English lessons as part of an Intensive or Super Intensive Course

### Professional

Level 5 (Bayswater) / B1+ Requirement

Professional Course	Duration	Price	Start Dates
Digital Marketing	4 weeks	£2,100	6 May, 7 Jul, 1 Sep, 3 Nov
International Business Management	4 weeks	£2,100	2 Jun, 4 Aug, 6 Oct

### Premium Package

Professional and English	8 weeks	12 weeks	24 weeks	36 weeks
Any UK city. Any English or Professional Course	£3,310	£4,530	£8,000	£11,430
Extra week	£414	£378	£333	£318

- Premium Package includes registration fee and materials fee
- Courses to be studied one course at a time, not simultaneously



▲ 61 Western Rd, Hove BN3 1JD

### Quick Facts

#### All Courses Include

Online placement test  
Welcome activity  
Organised social programme  
Student handbook  
End of course certificate  
WiFi

#### Professional Courses

Minimum age: 18  
Class size: Max 15, Average 8  
Duration: 4 weeks, 60 hours

#### English Courses

Minimum age: 16  
Minimum stay: 1 week  
Courses start: Every Monday

#### English Lessons

1 Lesson: 45 minutes  
20 Lessons: 15 hrs/week  
25 Lessons: 18.75 hrs/week  
30 Lessons: 22.5 hrs/week

#### Family Options

Parent & Child, Young Learner  
(Mon-Fri)  
Tuition only

#### Day Camp (Mon-Fri)

Tuition, lunch and half day activities

Course schedule may take place in the morning or afternoon

#### School Closure Dates

1-3 Jan, 18 & 21 Apr, 5 & 26 May,  
25 Aug, 22 to 26 Dec 2025,  
1 Jan 2026





# Brighton

## Accommodation, Transfers and Other Fees

### Accommodation Prices are per week

Bus: Walk:

Homestay Age 16+	Time	Bed & Breakfast	Half Board
Single Shared Bathroom	20 - 60 min	£165	£210
Twin Shared Bathroom*	20 - 60 min	£145	£190

<b>Summer Supplement</b> 01 Jun - 30 Aug   £30 p/w	<b>Christmas Supplement</b> 21-27 Dec   £50 p/w	<b>Private Bathroom</b> £80 p/w
<b>Dietary Supplement</b> £25 - £45 p/w	<b>Under 18 Supplement**</b> £20 p/w	

- \* Twin rooms are only available for two people traveling together
- \*\* Applicable to ages 16-17
- Students in a single room may be housed in the same homestay as other students
- Students under 18 in a homestay must book at least Half Board, a return transfer and provide a parental consent form
- Extra nights: billed on a pro rata basis

Residences Age 18+	Time	1 - 11 weeks	12+ weeks	Dates
Standard Single En suite*	5 - 10 min	£350	£325	Year round
Standard Single En suite (Summer only)	30 min 15 min	£350	-	Coming soon

<b>Weekly Cleaning Supplement*</b> £22.50 p/w	<b>Weekly Breakfast Supplement*</b> £60 p/w
--	--

### Other Charges

Prices per booking	
Registration Fee	£95
Accommodation Booking Fee	£50
Bank Charges	£12
Exam fee - FCE*	£205
Exam fee - CAE*	£210
Exam fee - IELTS (IELTS Test Centre)*	Coming soon
Professional Course Material Fee (4 weeks)	£28
Career Preparation Programme Fee***	£1000
Prices per week	
Materials Fee**	£7
Insurance*	£8

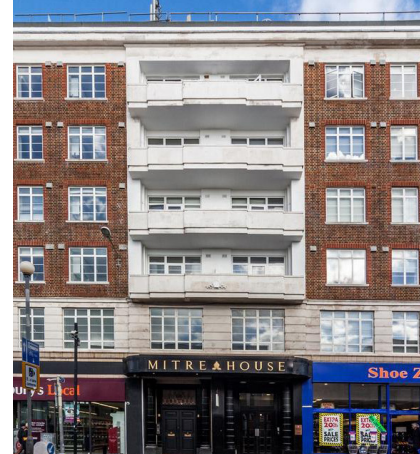
- \* Optional charges
- \*\* Applies to all language courses
- \*\*\* Available for YMS visa holders
- Materials fee includes access to the my.Bayswater learning platform and all learning materials used in the classroom

All prices are subject to change

### Transfers

Airport/Station	One Way
Gatwick	£130
Heathrow	£200
London City	£245
St Pancras	£245
Luton	£255
Stansted	£255

Transfer prices can include up to 2 people per vehicle - same flight and address



▲ Britannia Study Hotel, 150 Western Road, Brighton, BN1 2DA

### Quick Facts

#### Room Types

- Single
- Twin

#### Board Types

**Half Board:**  
Room, breakfast and one main meal provided

#### Self-catering:

Room provided without meals

#### Bathroom Types

**En suite:**  
Toilet and shower or bath can be accessed from within your room

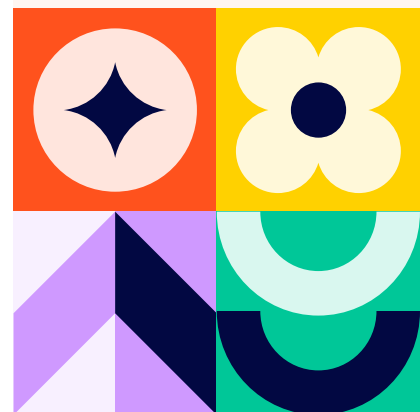
#### Shared Bathroom:

Bathroom shared with other residents and/or host family

**Studio:** En suite bathroom, with kitchenette

#### Arrival and departure day:

Sunday to Saturday



# Bournemouth

## Course Fees

### General English and IELTS Preparation Prices and lessons are per week

Courses	Lessons	1 to 11	12 to 23	24+
Standard	20	£275	£250	£230
Intensive	25	£305	£275	£250
Super Intensive	30	£345	£330	£295

- IELTS Preparation: Available as a module. A combination of 20 or 25 General English lessons + 5 IELTS lessons, as part of our Intensive or Super Intensive Course. IELTS core class subject to availability and demand.
- Minimum level for IELTS Preparation: Level 4 (Bayswater)/B1 (CEFR)

English Plus Add-ons	Lessons	Price	Notes
One to one lessons	5	£375	Custom packages available

Family Options	Lessons	1+	Extra adult/child	Course dates
Young Learner (age 12+)	20	£275	£250	23 Jun - 15 Aug
Parent & Child (age 12+)	20	£500	£250	23 Jun - 22 Aug
Day Camp (age 12-17)	20	£495	-	

- Young Learners must be accommodated with a parent/guardian

### Professional Level 5 (Bayswater) / B1+ Requirement

Professional Course	Duration	Price	Start Dates
International Business Management	4 weeks	£2,100	2 Jun, 4 Aug, 6 Oct
Customer Experience Management	4 weeks	£2,100	6 May, 7 Jul, 1 Sep, 3 Nov

### Premium Package

Professional and English	8 weeks	12 weeks	24 weeks	36 weeks
Any UK city. Any English or Professional Course	£3,310	£4,530	£8,000	£11,430
Extra week	£414	£378	£333	£318

- Premium Package includes registration fee and materials fee
- Courses to be studied one course at a time, not simultaneously



▲ St Peters Quarter,  
Bournemouth BH1 2AD

### Quick Facts

#### All Courses Include

Online placement test  
Welcome activity  
Organised social programme  
Student handbook  
End of course certificate  
WiFi

#### Professional Courses

Minimum age: 18  
Class size: Max 15, Average 8  
Duration: 4 weeks, 60 hours

#### English Courses

Minimum age: 16  
Minimum stay: 1 week  
Courses start: Every Monday

#### English Lessons

1 Lesson: 45 minutes  
20 Lessons: 15 hrs/week  
25 Lessons: 18.75 hrs/week  
30 Lessons: 22.5 hrs/week

#### Family Options

Parent & Child, Young Learner  
(Mon-Fri)  
Tuition only

#### Day Camp (Mon-Fri)

Tuition, lunch and half day activities

Course schedule may take place in the morning or afternoon

#### School Closure Dates

1-3 Jan, 18 & 21 Apr, 5 & 26 May,  
25 Aug, 22 to 26 Dec 2025,  
1 Jan 2026



#### Agent Enquiries

Our Agents are appointed experts in your country and can give you specialist advice on our courses, as well as any visa requirements. Contact us for an Agent in your area.

For agent sales enquiries please contact us at [partners@bayswater.ac](mailto:partners@bayswater.ac)

# Bournemouth

## Accommodation, Transfers and Other Fees

### Accommodation Prices are per week

Bus: Walk:

Homestay Age 16+	Bed & Breakfast	Half Board
Single Shared Bathroom	£160	£190
Twin Shared Bathroom*	£140	£170

**Summer Supplement**  
01 Jun - 30 Aug | £30 p/w

**Christmas Supplement**  
21-27 Dec | £50 p/w

**Private Bathroom**  
£45 p/w

**Special Diet**  
£25 - £45 p/w

**Under 18 Supplement\*\***  
£20 p/w

- \* Twin rooms are only available for two people traveling together
- \*\* Applicable to ages 16-17
- Students in a single room may be housed in the same homestay as other students
- Students under 18 in a homestay must book at least Half Board, a return transfer and provide a parental consent form
- Extra nights: billed on a pro-rata basis

Residences Age 18+	Time	1 - 11 weeks	12+ weeks	Dates
Standard Single En suite	15 min 8 min	£275	£240	Year round

Residences Age 16+	Time	1 - 11 weeks	12+ weeks	Dates
Standard Single En suite Half Board (Summer only)	15 min 8 min	£445	-	22 Jun - 17 Aug

**Summer Full Board Supplement (packed lunch)**  
£40 p/w

### Other Charges

Prices per booking	
Registration Fee	£95
Accommodation Booking Fee	£50
Bank Charges	£12
Professional Course Materials Fee (4 weeks)	£28
Career Preparation Programme Fee***	£1,000

Prices per week	
Materials Fee**	£7
Insurance*	£8

- \* Optional charges
- \*\* Applies to all language courses
- \*\*\* Available for YMS visa holders
- Materials fee includes access to the my.Bayswater learning platform and all learning materials used in the classroom

### Transfers

Airport/Station	One Way
Bournemouth	£65
London Gatwick	£230
London Heathrow	£210
Luton	£265
London Stansted	£290

Transfer prices can include up to 2 people per vehicle - same flight and address

All prices are subject to change



▲ 51-65 Holdenhurst Rd,  
Bournemouth BH8 8GN

### Quick Facts

#### Room Types

- Single
- Twin

#### Board Types

##### Bed & breakfast:

Room and breakfast provided

##### Half Board:

Room, breakfast and one evening meal provided

##### Self-catering:

Room provided without meals

#### Bathroom Types

##### En suite:

Toilet and shower or bath can be accessed from within your room

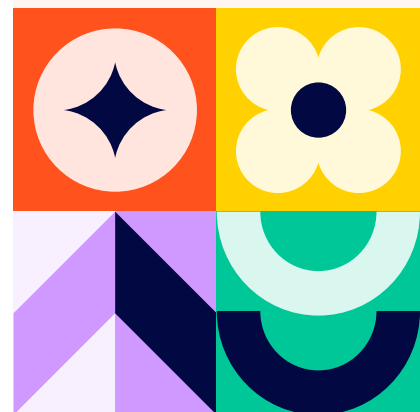
##### Shared Bathroom:

Bathroom shared with other residents and/or host family

**Studio:** En suite bathroom, with kitchenette

#### Arrival and departure day:

Sunday to Saturday



#### Agent Enquiries

Our Agents are appointed experts in your country and can give you specialist advice on our courses, as well as any visa requirements. Contact us for an Agent in your area.

For agent sales enquiries please contact us at partners@bayswater.ac